

New Kids on the Litigation Block CaseMap & TimeMap

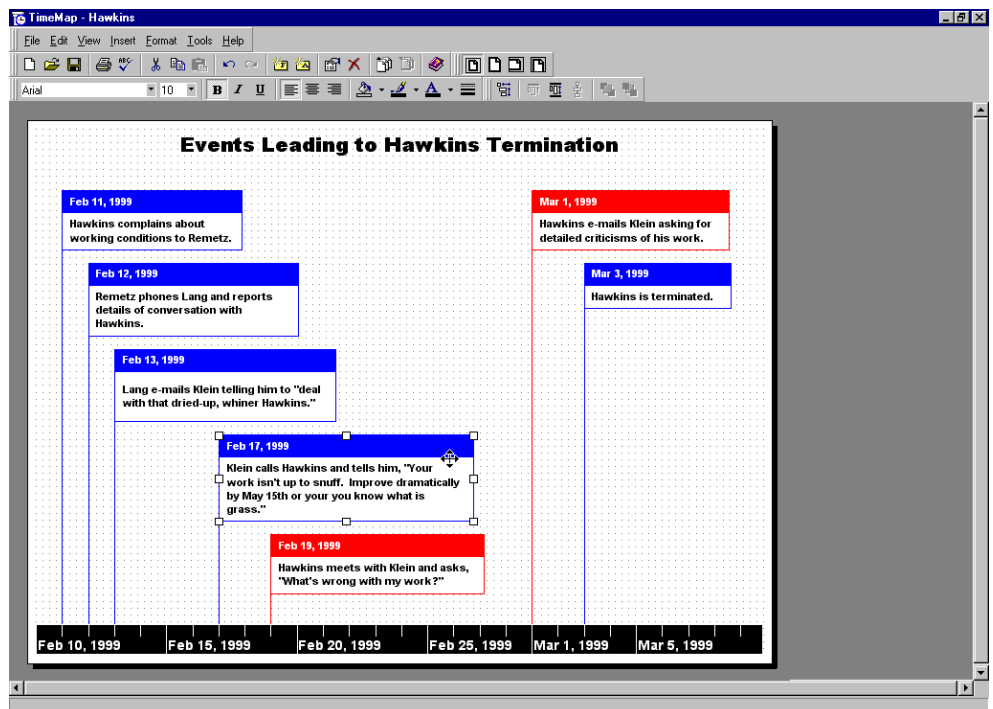
BY MICHAEL R. ARKFELD, ESQ.

From the time a litigation client walks through the door, having the ability to assemble case facts in an accessible and useable format for trial is a necessity. If you want to replace your legal pad with sophisticated but easy-to-use litigation knowledge management software consider CaseMap and TimeMap. They are litigation analysis tools as opposed to merely data management tools.

CaseMap enables you to outline the issues in your case and then to organize and link the facts, documents, witnesses and demonstrative evidence that relate to the issue and sub-issues. CaseMap can easily replicate the following litigation process for analysis and reports.

For example, initially when we review a case for preparation for litigation we build a list of the parties, key witnesses, organizations and documents in a case. These persons, documents or organizations will be the main building blocks for our case. Then we begin to define the causes of actions, elements and factual issues that will be determinative in our case.

After this, we begin the process of linking the parties to key issues, we build a chronology of known facts (with dates and times) and link these



TimeMap makes it a cinch to create chronology visuals for use during hearings and trials. And now, a CaseMap 3.1 Update Utility available on the CaseSoft Web site allows CaseMap and TimeMap to work together.

facts to the issues. We also need to determine if the fact is disputed and the source and whether the fact is favorable, unfavorable, neutral, etc. This list of facts will assist in focusing your attention on any questions in the case. From this factual foundation you can then move to case analysis by creating timelines and chronologies of your facts. CaseMap replicates this process and can then be used in many litigation functions.

For example, if you print out a set of facts that are both favorable and unfa-

vorable then one can discuss the facts with your clients and co-counsel to determine the probability of success at trial or for use during settlement negotiations. Also, CaseMap can easily be used to prepare a motion for summary judgment. As you enter your facts into CaseMap and mark them undisputed then you can print out a report for the court showing the undisputed facts supporting your MSJ categorized by issue.

Other features include replication and synchronization which provides

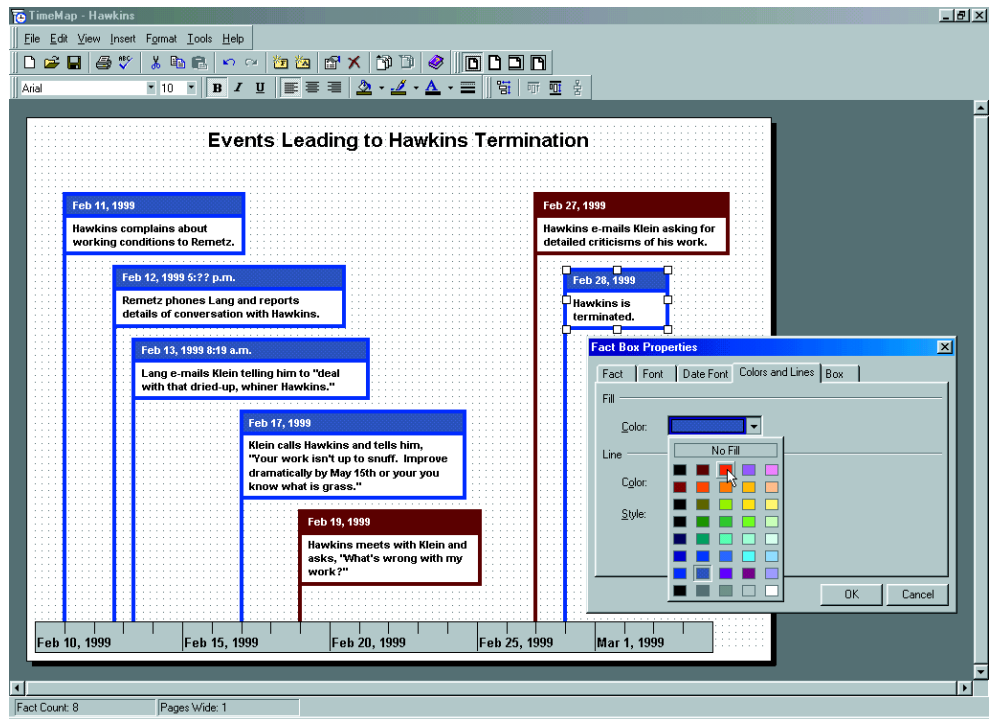
the capability of using CaseMap on a laptop, while traveling, and then merging your workproduct onto the main computer when you get back to the office; filtering and tagging of facts allows for one to limit the facts that appear on your spreadsheet to facts about a particular issue, etc.; and CaseMap permits you to export reports as HTML for use on your Internet, Extranet or Intranet site.

TimeMap creates chronological timelines for use during hearings or trial. After entering the key facts and dates, TimeMap automatically generates a timeline graphic. It creates a proportional time scale and positions fact boxes above the dates on which the facts occurred. These timelines can be customized and enlarged for use before judges and juries. You can change the number of pages the timeline is on, set the color and line weight of the fact boxes and the fonts. You can save the files as JPEGs, bitmaps and Windows metafiles that can be imported into your word processor, e-mailed or printed. TimeMap is a stand-alone product or can be used in conjunction with CaseMap. The cost is approximately \$200.

To download trial copies of this software visit www.casesoft.com. There are no other similar software products specifically designed for the legal field, but check out Inspiration software (www.inspiration.com) for a generic brainstorming and planning type of software.

CaseMap is a single user license that you are able to load onto as many computers as you want as long as you are the only person using the software. CaseMap is priced at \$495 with a 90-day guaranteed return policy.

CaseMap and TimeMap are two strong litigation knowledge management tools. They are issued-driven



As you enter facts (or import them from CaseMap), TimeMap automatically creates a proportional time scale and appropriately positions fact boxes.

thinking tools that permit an attorney to save and build on the analysis of a case as it progresses. This software is on its way to replacing the ubiquitous legal pad on your desk. **END**